



WEST END NEIGHBORS'  
**GARDEN TOUR**  
WEST 7<sup>TH</sup> ST., ST. PAUL

A FREE EVENT  
SPONSORED BY  
THE FORT ROAD  
FEDERATION



2013 MAP  
AND GUIDE  
BOOK

SAT.  
JUNE 15<sup>TH</sup>  
10 AM  
to  
4 PM



[WWW.FORTROADFEDERATION.ORG](http://WWW.FORTROADFEDERATION.ORG)  
OR CALL (651) 222-5536



# SIXTH ANNUAL WEST END NEIGHBORS' GARDEN TOUR

## WELCOME

Welcome to St. Paul's West End. This, our sixth annual free West End Neighbors' Garden Tour is our way of welcoming you into our neighborhoods. Please plan to spend the day with us, taking time out along the way to relax over coffee or lunch at one of our supporting businesses.

Many of the gardens are closely clustered making it possible to visit several by walking, biking or using public transit.

To provide garden tour map booklets and assist you with questions you may have about the tour, we will have neighborhood greeters at three locations along West Seventh Street at #1500, Mississippi Market; #974, Fort Road Federation office and #531, Mancini's Char House. Signs and bright streamers will help you locate the gardens.

This map booklet will be useful for planning your tour. Additional information and photos of gardens from previous tours will be posted at <http://fortroadfederation.org/garden/>.

## PLANT SALE

The plant sale at the Fort Road Federation parking lot, together with support from our advertisers, enables us to continue our history of offering the tour for free. If you are pleased with what you experience on the tour, please let our advertisers know that by visiting their establishments.

Plant questions? Master Gardeners will be on hand to answer them.

Restroom facilities are available at many public locations along W. 7th Street.

## HIGHLIGHTS

At garden #2, Fresh Grounds Coffee Shop, an Art Garden will appeal to all ages.

At garden #10, you will find an answer to your question, "I wonder how they could keep bees in the city?"

Garden #11, the Dousman neighborhood community garden, is filled with whimsy, delight and activities for all ages.

There are raised beds in gardens #3 and #6. There is part-shade in gardens #4 and #5.

Sun prevails at gardens #1 and #12. And a "critter hunt" (manmade, of course,) at garden #8 will entertain all ages.

Both an English Cottage Garden #7, modeled after those of the Kew Gardens in England, and a Country Cottage Garden #13, designed based on early photographs of the house, add special interest to the tour.

Goff & Boysen Memorial & Healing Garden #16, would be a good starting or ending point, particularly for those who are biking or walking the tour.

## LOCATIONS



Look for these signs along the tour route to help find your way.

# INSTY-PRINTS®

BUSINESS PRINTING & DIGITAL SERVICES

*Creative Design, Typesetting  
Business & Personal Printing  
Digital Printing Color & B&W*

**12 Color Canon Wide Format Prints**  
(output width up to 42")

Posters • Artwork • Yard Signs • Blueprints

- Custom Invitations
- Letterhead
- Envelopes
- Business Cards
- Brochures
- Newsletters
- Booklets
- Flyers
- Tickets
- Multi-part Forms
- Notes & Pads
- Labels
- Postcards
- Laminating
- Foam Core Mount
- Rubber Stamps
- Cut, Fold, Staple,  
Bind and more!

2365 West 7th Street  
St. Paul, MN 55116

**651-690-4462**  
instyprintsw7.com

Mon-Thurs 8am-6pm  
Fri 8am-5:30pm

## GARDEN #1

881 Otto Ave.



An exuberant and eclectic mix of red, yellow and white flowers fill the welcoming front gardens. More subtle hues of purple, yellow and white predominate in the side garden where there is an abundance of tulips, asters, phlox, iris and poppies. Behind the white picket fence is a veritable wall of lilacs. You will find the vegetable garden at the rear of the house.

Many of the garden's plants were contributed by friends and family. Mums in the garden may be from plants that are over 90 years old. The mums have become quite literally like a low hedge within the shrubs that provide a protective border for the home and gardens.

Following a love of playing in the dirt as a child, this gardener created the first gardens ten years ago by hand digging them. Not content to end there, rocks were hand-collected from a pit nearby to create footpaths and borders.



**Coffee. Community. Conversation. Cause.**

**\$2.00 Lattes - Tuesdays & Thursdays**

**Home of Annie's Excellent Oatmeal - Scones To Die For  
Great New Sunday Brunch Menu**

Hours: MON-FRI 6:30am-5pm - SAT 7am-5pm - SUN 8am-2pm

1362 7th Street West - Saint Paul, MN 55102

Catering & Meeting Room Available

[www.freshgroundscoffee.com](http://www.freshgroundscoffee.com)

## GARDEN #2

*Fresh Grounds Coffee Shop*

1362 7th Street W.



**F**resh Grounds has invited a variety of artists to create floral related garden art, today, on their large patio. The area is divided into 24 squares that will feature innovative garden and floral displays. The artists will be creating works featuring a collection of miniature plants, vegetables in a floral design, Legos and artificial flowers. There will be something here for all ages.

Fresh Grounds, a resource for RS EDEN, a non-profit organization, opened its doors in 2005 as an employment training program for formerly homeless young adults who had aged out of the foster care system. This organization provides recovery, accountability, and support services to facilitate moving from non-productive behaviors to responsible, self-sufficient lifestyles.



## Day By Day Cafe

477 West 7th St.  
Saint Paul, MN

Ph. 651-227-0654

Mon - Sat 6 AM to 3 PM  
Sunday 7 AM to 3 PM

*Full espresso bar!*

Available for private functions  
after hours.

Large patio with koi pond and  
waterfall.

*Now accepting Visa and MC*

[www.daybyday.com](http://www.daybyday.com)

## GARDEN #3

636 Victoria Street S.



**W**hile most city lots are rectangles, this lot is a pie-shape wedge, begging the planting of a Northstar Cherry tree. The first year it produced enough cherries to make six pies. Spring brings bloodwort to the boomerang shaped garden planted with lilies, perennials and reseeding annuals. Blue Siberian squill blooms in the lawn. Two raised beds are planted, one with June bearing strawberries and one with salad greens.

Masses of naturalized daffodils and white calla lilies bloom, in their order, after the squill. California poppies provide a pop of color. A kitchen garden grows around the cherry tree. A path of granite pavers is lined with creeping thyme. A prized native Clove Currant has a spicy sweet yellow flower.

Each year garden areas are expanded, eliminating more lawn and lawn mowing. Raspberries and tall grasses grow at the rear of the lot. Summer brings a 50 foot wall of morning glories!

COME WORSHIP WITH US!

## St. Peter's Lutheran Church LCMS

*Blessed... to be a blessing for 127 years*

SUMMER WORSHIP  
Memorial Day - Labor Day  
Thursday 7PM Sunday 9AM

VBS  
August 4-8

RALLY DAY  
Sunday, September 8



St. Peter's Lutheran Church . 530 South Victoria Street, St. Paul, Minnesota 55102  
651.228.1482 email: [stpetersstpaul@comcast.net](mailto:stpetersstpaul@comcast.net) [www.saintpeterslutheran.net](http://www.saintpeterslutheran.net)

## GARDEN #4

818 Watson Ave.



This garden awakens in spring with more than 1,000 tulips and 500 daffodils blooming in a myriad of colors and shapes. The progression of varied bloom times ensures a spectacularly colorful transition from early- to late-spring.

Empty nesters, the owners set about to create a unique raised-bed garden.

The beds, scattered about in a variety of colors, have hard-surface paths between them.

The gardeners are, admittedly: "Coneflower fanatics—every single color." The coneflowers, seeded once, come back each year. Found throughout the beds, they looked like one gigantic bouquet last summer! Morning glories surround the house, and a new variety with a small red blossom, called a cardinal flower has been added; it is highly attractive to hummingbirds.

ESTD  1905

**J.W. HULME CO.**

MADE IN AMERICA

**STOP BY AND ENJOY  
A GIFT WITH PURCHASE**

Receive your choice of a Handline Pocket Journal or BI-Fold Wallet with a purchase of \$300 or more. Offer good in-store only June 15 through June 22, 2013.

*Not valid on previous purchases, returns or exchanges.*

**FACTORY & SHOWROOM**

678 West Seventh Street  
St. Paul, Minnesota 55102

## GARDEN #5

895 James Ave.



This typical narrow city lot was transformed into a not-so-typical garden wonder eleven years ago when the owner needed a new sidewalk. Now she is working on a second makeover of her gardens.

A riot of colorful impatiens adorns the walkway to the back yard, where a sun-faced plaque atop the garage overlooks the gardens. Two closely cropped apple trees provide a canopy of shade for numerous perennials and shrubs. Originally, hostas were planted under the trees, and they filled the area all too well. Last year, the gardener removed most of them and replenished the space with a variety of newcomers, including heuchera, Solomon Seal and hydrangea.

A favorite species, besides the prolific clematis, is an eight-foot tiger eye sumac, which she has named the "Doctor Seuss" tree. The addition of a new fence continues to make the garden a "work in progress".

# Your neighbor, your bank.

We've reopened our doors to our neighbors in the West End.  
Come visit us for all your banking needs!

**Personal Banking: Simple Checking, Free Online Banking & Bill Pay**  
**Mortgages & Home Equity Loans**  
**Business Banking • Cash Management Services**



## AMERICAN BANK



2310 Seventh Street West • Saint Paul  
651.643.8426 • [www.americanbankmn.com](http://www.americanbankmn.com)

## GARDEN #6

767 James Ave.



**T**he new home had a large lot and the owners eagerly looked forward to Spring. Then it was discovered that the only evidence of landscaping was an oddly shaped rhubarb patch. Rhubarb... and nothing else.

Whimsically chaotic yet marginally-organized describes the style of the garden. It has taken on the form of a colorful modern abstract painting, with colors, heights and textures mixing it up for interest. Edibles like kale and rainbow Swiss chard are used as annuals. A huge cut leaf Sumac with twisty branches and red-veined leaves, various ligularia and a

Summer lilac that blooms from July through Fall are favorites. Edibles include the fruit of a currant bush, a cherry tree, two young apple trees and of course... the rhubarb.



# We're here for you — and the ones you love.



- Health care for all ages: infants, children, adults and elders
- Primary care, dental and mental health services
- Health education, advocacy and outreach programs
- On-site lab, ultrasound and X-ray facilities
- New eco-friendly clinic with free on-site parking
- Accept MA, Medicare, and private insurance
- Sliding-fee discounts for eligible patients



## United Family Medicine

A COMMUNITY CLINIC

**MAIN CLINIC:**

Monday-Thursday 8am-8pm  
Friday 8am-5pm Saturday 8am-noon  
1026 West 7th Street, Saint Paul

**SIBLEY PLAZA:**

Monday & Friday 10am-5pm  
Wednesday 11am-7pm  
2423 West 7th Street, Saint Paul

INTERPRETERS AVAILABLE

[unitedfamilymedicine.org](http://unitedfamilymedicine.org)

651-241-1000

## GARDEN #7

439 Vance St.



This exceptional English Cottage Style garden is patterned after the Kew Gardens in England. After seeing the Gardens, the owner determined that he would recreate, after their fashion, gardens bursting with blooms from an astounding number of flower varieties packed into small spaces.

In a dramatic color display, the boulevards burst with the early spring colors of red, yellow, pink and purple tulips. Peonies and daylilies greet visitors on either side of the walk bordered by a short wrought iron fence. Planters exuberantly filled with petunias and kale flank the front steps. A statue of the Virgin Mary near the house is sheltered by verdant growth. Annabelle and other varieties of hydrangea front the lawn. Purple, blue and yellow clematis wind their way around Old Garden Roses in various shades of pink and white. Japanese tree peonies add height and dimension in the garden.



SHOW THIS AD FOR  
\$1 OFF ANY BEVERAGE

Stop for coffee  
Meet friends  
Stay for lunch  
Enjoy live music

#### HOURS

6:30 A.M. - 7 P.M. MONDAY -FRIDAY  
(OPEN LATER ON LIVE MUSIC NIGHTS)

8 A.M. - 5 P.M. SATURDAY

8 A.M. - 5 P.M. SUNDAY

459 WEST 7TH • ST. PAUL • 651.600.3400  
[WWW.CLADDAGHCOFFEECAFE.COM](http://WWW.CLADDAGHCOFFEECAFE.COM)

## GARDEN #8

376 St. Clair Ave.



The gardens at the Henry Lauer house (1882) have been 30 years in the making. Two sides of the walled garden consist of 1) a perfect border of arborvitae, and 2) juniper trees, providing an elegant retreat from the busy street. The owner worked with a professional landscape designer to create an enduring foundation for the garden. One of the goals for the design was to have 100% Minnesota hardy and low maintenance plants. The long drive and patio were constructed of recycled historic street pavers.

After straight line winds damaged a Chinese elm tree in the boulevard it was topped at 18 feet. Chainsaw artist Kevin Showell carved the spectacular French Voyageur.

Small garden sculptures, mostly animals, scattered throughout the garden entertain children with "critter hunts." Visitors on the tour, both young and not so young, are invited to join in the hunt for the "critters."



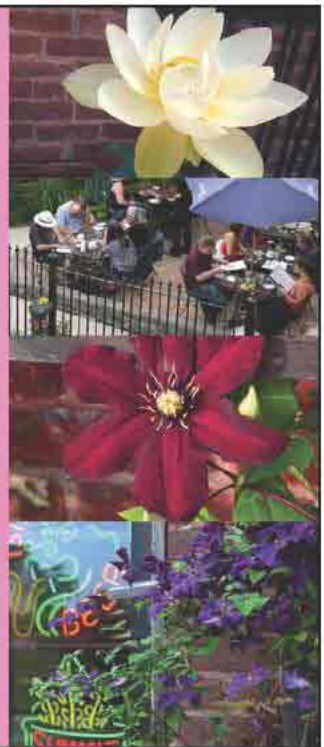
PATIO  
DINING

THAI  
FOOD

BEER  
WINE

SUPATRA'S  
THAI

967 W. 7TH  
651.222.5859  
SUPATRA.COM



## GARDEN #9

*Lauer Flats*  
Western at St. Clair Ave.



**H**enry and Charles Lauer, built Lauer Flats in 1887 in a vernacular Greek Revival style. When the building was threatened with demolition in 1978, the community began an effort to save the structure. It was then placed on the National Register for Historic Buildings. In 1980, the building was converted to condominiums.

The secluded garden, hidden from view, provides a cloister for the residents. The boulevard trees, crab apples, tall elms on Western Avenue and the wrought iron fence provide a departure from the busy commerce on West 7<sup>th</sup> Street.

The decks and gardens reflect the work of many homeowners at Lauer. The many container plantings on the decks reveal a love of plants and flowers. Garden plantings curve along the fence; sometimes supported by and always softening its metal. The variety of plants in the garden reveals the efforts of the many hands that have selected them and nurtured them.

an ordinary life of extraordinary awareness  
excitement growth meaning

## gestalt work

an existential practice

INDIVIDUAL SESSIONS SMALL GROUP WORK

### What Are **You** Going Through?

Gestalt Work helps you explore your life story and your present experience. In the process, you will develop a toolkit of observational and thinking methods; clarify your core principles; and define your goals.

**JERRY ROTHSTEIN**

265 Oneida Street, Suite 203 • St. Paul, Minnesota 55102  
651.587.8859 • [gestaltwork28@gmail.com](mailto:gestaltwork28@gmail.com) • [gestaltwork.org](http://gestaltwork.org)

## GARDEN #10

191 Richmond St.



**T**he boulevard is alive with bees and butterflies enjoying a multitude of pollinator plants. Giant sunflowers stand like sentinels before a stone pathway, arched with red twig dogwood and Amur maple, leading to a secret garden beyond. Within it, the scent of honeysuckle growing along the bee yard fence draws you on. Inside the bee yard fence, beneath a mighty catalpa tree, sits a lone beehive in a sanctuary of its own.

The vegetable garden within is grown vertically, wherever possible, in order to get the maximum number of plants into the space available. In the far back corner is the wood cutting area, where branches from tree-trimming are fashioned into sticks to use as plant supports. Everything in this garden has a purpose.

All the  
best  
for your  
nest



Community Neighborhood Housing Services has the help you need to repair your home, prepare to buy, or save your home from foreclosure.



Community  
Neighborhood  
Housing Services

Creating Homeowners. Building Community.

NeighborWorks®  
HomeOwnership Center



651-292.8710

communitynhs.org

35 Water Street W.

Saint Paul, MN 55107

## GARDEN #11

*Dousman Community Garden*  
Dousman St. at W. 7th St.



The desire to maintain an overgrown and trash collecting lot led to the formation of a plan to create a garden. Activities, art and plants (in order of importance) were the things we wanted out of the garden. Projects and events at the garden do not require group permission. If you plant it, someone else can eat it. If the space is available, you can use it. We've discovered that the garden has transformed our neighborhood from one of strangers into one of friends. Today, during the tour, visitors can expect some or all of the following: red wiggler racing, face painting, wish flag making, mosaic stepping stone making, lemonade drinking, marshmallow roasting, weeding and horse shoe throwing. Visitors are invited to participate. Plans and plants for this year may include: straw bale beds, hops with a hop structure, a fire pit, water collecting devices, earth mound seating and a little free library.

# WEST END NEIGHBORS' GARDEN TOUR

WEST 7<sup>TH</sup> ST., ST. PAUL


JUNE 15<sup>TH</sup>, 2013  
10 AM to 4 PM

PH. (651) 222-5536 • WWW.FORTROADFEDERATION.ORG



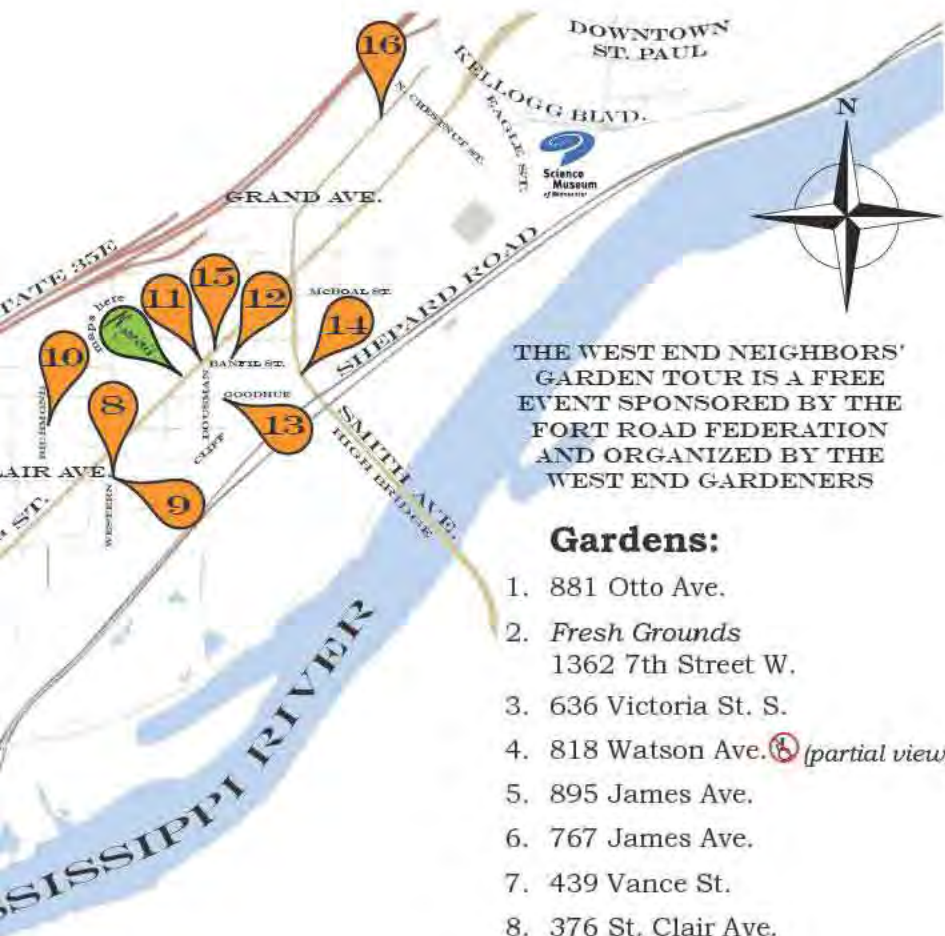
Look for these signs along the tour route to help find your way.



 **Plan**  
Fort Road

Pick up maps of the Federation, M

Support the seedlings, per donated by the be answering



THE WEST END NEIGHBORS' GARDEN TOUR IS A FREE EVENT SPONSORED BY THE FORT ROAD FEDERATION AND ORGANIZED BY THE WEST END GARDENERS

**Gardens:**

1. 881 Otto Ave.
2. *Fresh Grounds*  
1362 7th Street W.
3. 636 Victoria St. S.
4. 818 Watson Ave. (partial view)
5. 895 James Ave.
6. 767 James Ave.
7. 439 Vance St.
8. 376 St. Clair Ave.
9. *Lauer Flats*  
Western Ave. at St. Clair Ave.
10. 191 Richmond St. (partial view)
11. *Dousman Community Garden*  
Dousman St. & West 7th St.
12. 298 Banfil St.
13. 273 Goodhue St.
14. *North High Bridge*  
Cliff Street & Smith Ave.
15. *River Garden Yoga Center*  
455 7th St.
16. *Goff & Memorial Honoring Garden*  
255 Smith Ave. N.

**Plant Sale & Maps**

Fort Road Federation - 974 W. 7th Street  
 on the day of the tour at the Fort Road Mississippi Market and Mancini's.  
 Garden Tour by purchasing perennials, daylilies and houseplants from the gardeners. Master Gardeners will be available for questions during the plant sale.

MAKE YOUR HOME A



## Attention Homeowners:

Sign up for Project Safe Haven!

You will receive a:

- Free Smoke Alarm
- Free Carbon Monoxide Detector
- Visit by Saint Paul Firefighters

In Saint Paul, 100% of fire deaths happen in the home. Safe Haven brings you and firefighters together to protect your family and create a safe home environment.

For more information call 651-228-6273  
or e-mail [fireevents@ci.stpaul.mn.us](mailto:fireevents@ci.stpaul.mn.us)



## GARDEN #12

298 Banfil St.



**N**ow in her multicolor-painted home for twelve years, the gardener recalls that during the first spring in her new home, she discovered one tiny crocus blooming in her boulevard. This tiny blossom became her inspiration for the collection of little gardens you are visiting today. Created by serendipity more than by design, the gardener says she finds

the experience of gardening is a quiet, healing practice. More often than not, because the gardens on this corner lot are also visible to people moving along Dousman Avenue, gardening has also become an opportunity to connect with wonderful neighbors.





www.svdpmpls.org



Check us out on twitter @vincentdepaulmn

**Not your garden-variety  
thrift store.**

## St. Vincent de Paul Thrift Store

Great ideas on [www.pinterest.com/vincentdepaul/](http://www.pinterest.com/vincentdepaul/)

461 W 7th Street Saint Paul 651.227.1332

Monday-Friday

9:30-5:00 pm

Saturday

9:30-3:00 pm

**COUPON  
25% OFF**

**one item at the St. Paul store**

Limit one coupon per customer

Cannot be copied or combined with other offers or sales. Expires 7/15/2013

## GARDEN #13

273 Goodhue St.



The charms of a country cottage garden abound in the daisies, coneflowers and rudbeckia that line the white picket fence, with more of the same in mirthful masses within it. A blue clematis sprawls at its corner. False indigo, peonies and pink English roses bloom along the boardwalk. The boardwalk, appropriate to the era of the

house, is a clever solution for moving about in an area that is low and waterlogged all spring. Vegetables and herbs have elegantly found a place amid the myriad blooms.

Taking center stage in the backyard, a pioneer white oak, one of the largest and oldest in Saint Paul, provides a canopy of protective shade. In contrast to the imposing tree, a tiny fountain by the back patio was created from a metal washtub filled with little stones from Lake Superior.



Let your plans  
blossom!



**DRAKE BANK**  
Where small business is big!

**HOME  
LOANS**



651.224.5000 | [drake-bank.com](http://drake-bank.com) | Member FDIC  
Between Robert and Wabasha on Plato Boulevard

NMLS# 466969

## GARDEN #14 *North High Bridge Park Cliff St. & Smith Ave.*

In 1993, the North High Bridge Park's first installation was created with huge stones from a local sewer separation project, and children subsequently planted its garden of daylilies. In 1995 sculptor Zoran Mojsilov used the remaining stone to create the "Watcher," and a children's empowerment project relocated its "Green Chair" from the Walker Art Center. The park was dedicated Halloween 1996. In 1997 West End Girl Scouts installed a Peace Pole. In 2004, artist Craig David incorporated the baptismal gate salvaged from St. Stanislaus Kostka Church in an installation "Community Gate Project" commemorating the contributions of West End Czech and Slovak immigrant families. Its theme is derived from the Czech composer Antonín Dvořák's opera "Rusalka."

# River Garden Yoga Center

"If you can breathe, you can do yoga."

-Krishnamacharya

**River Garden Yoga Center** offers a variety of morning, afternoon and evening classes for all levels of experience.

Our certified teachers will help you explore yoga poses, calm yourself through breathing exercises, and still your mind through meditation.



We offer a variety of traditions including Kundalini, Hatha, Viniyoga, Iyengar and meditation classes.



455 W. 7th St.  
Saint Paul, MN 55102

[www.rivergardenyoga.com](http://www.rivergardenyoga.com)

## GARDEN #15

River Garden Yoga Center  
455 7th St. W.



The walled-in intimate courtyard garden is a secluded outdoor room complete with fireplace. Informal plantings, a bubbling pool, stone paths and a simple palette of shade-loving plants create a soothing refuge.

The space, originally an asphalt parking lot, was redesigned in 2008 to include a garage and the garden. Located behind River Garden Yoga Center, it is a perfect refuge after yoga. The garden was designed by Martin Stern of Squire House Gardens in Afton and beautifully executed by Jeffrey Austin.

PLEASE ENTER THE GARDEN FROM THE ALLEY BEHIND  
RIVER GARDEN YOGA CENTER.

## Looking for someone who is different ...



Someone who truly understands what is important to you? Consider this:

- We are a faith-based membership organization that exists to serve our members—not Wall Street or shareholders.
- Our focus is on helping you be wise with money, live generously and thrive.
- Thrivent Financial for Lutherans and its members raised, contributed and donated \$165 million to communities, congregations and individuals in need in 2012.



**David W. Downing**  
Financial Associate  
651-493-1407 Office  
651-485-1699 Cell

**Contact me today.**

For additional important disclosure information, please visit [Thrivent.com/disclosures](http://Thrivent.com/disclosures).

## GARDEN #16 *Goff & Memorial Honoring Garden* 255 Smith Ave. N.

**G**off and Boysen Memorial and Honoring Garden (see facing page) is a place for quiet contemplation. Its serenity and beauty invite all who visit to stay awhile. Paths lead to benches and spaces for relaxation and quiet reflection. One of the features of the garden is its many sculptures. One in particular, a statue entitled “Garden Dreams,” conveys the nurturing, protective aura of this garden, much as we perceive the mother holding her baby tenderly and safely in her arms.

This exceptional garden is the realization of the inspired and shared vision of three employees of United Hospital.

NOTE: Free Parking at the “H-Lot” is available (from 10AM to 4PM only.) The lot is located behind Nasseff Specialty Center located at the corner of Smith Ave. and Chestnut Street.

A short walk on Smith will bring you to the garden entrance located on Smith at Walnut. The garden may also be accessed from Thompson Street (behind the hospital) or from the stairs that cross I-35E.



# The Goff & Boysen Honoring and Memorial Garden

**The Goff & Boysen Honoring and Memorial Garden** is a place to relax, heal and remember loved ones. Located on the United Hospital Campus, one of the largest hospitals in the Twin Cities, the garden was sponsored by United Hospital Foundation.

To contribute to the garden or other sponsorship opportunities call United Hospital Foundation at 651-241-8022 or visit [unitedhospital.com/unitedfoundation](http://unitedhospital.com/unitedfoundation).



UNITED HOSPITAL  
FOUNDATION



265 Oneida Street (at St. Clair)  
St. Paul, MN 55102

***Best wishes to travelers on the 2013 West End Neighbors' Garden Tour!***

In addition to boasting many of the very best gardens in St. Paul, West 7th is also home to the city's friendliest community center. Come visit us.

The West 7th Community Center's offerings include:

- Comprehensive senior programs, including senior events and activities, Meals on Wheels, visiting block nurse, and senior homemaking program
- Community Kids K-8th after school & summer camp programs
- Lots of community activities & events, including our women's and senior's health fairs, October spaghetti dinner and holiday dinner and gift programs

Learn more at [www.west7th.org](http://www.west7th.org) or by calling 651-298-5493.



# BEST PAWN

Now  
Offering  
Disc Repair,  
CDs, DVDs,  
and Games!

**Money to Loan  
We Buy - We Sell**

Gold, Diamonds, Jewelry, Coins, Electronics,  
Collectibles, Tools, Nearly Anything of Value

*Visit our two locations!*

**651-228-1847**

966 West 7th Street  
One Block West of the Brewery

**651-209-0398**

525 East 7th Street  
Two Blocks East of Red Savoy's

*Locally Owned & Operated*

# Mancini's

## CHAR HOUSE & LOUNGE

531 West 7th Street  
Saint Paul, MN 55102  
651.224.7345  
www.mancinis.com

Proud to be a West 7th Neighbor for 60 plus years!

*A Saint Paul Tradition. Come Home to Mancini's.*

Professional • Friendly • Local



 ASSOCIATED  
DENTISTS

651.222.0351  
1371 West 7<sup>th</sup> St Saint Paul 55102

# Schaffer<sup>Fine</sup> Art Services Inc

Saint Paul MN 55107  
651 225 1373 office  
651 225 1375 fax

A COMPANY BUILT WITH MUSEUMS IN MIND. Established in 1990



[www.schafferfineartservices.com](http://www.schafferfineartservices.com)

## Terrace Horticultural Books



Used and rare books, seed and plant catalogs  
ephemera and periodicals bought and sold

*We are open the day of the tour.  
Please come visit our award  
winning gardens.*

503 St. Clair Avenue • St. Paul, MN 55102  
Tel. (651) 222-5536 • Fax (651) 332-8184  
[www.terracehorticulturalbooks.com](http://www.terracehorticulturalbooks.com)





# Mississippi Market

Natural Foods Co-op



Certified **organic** grocer • Fresh produce  
**Sustainably raised** meats • **Local foods**

Gluten free options • Full service deli

**Fresh juices** & smoothies •

Local & imported cheeses

Body care & **wellness products**

**Classes** • Recipes

Mention the  
West End Garden Tour

&

Save \$1  
on a deli made  
**Panini Sandwich**

(regularly \$6.99)

**Everyone  
Welcome!**

[www.msmarket.coop](http://www.msmarket.coop)

**Offer valid only on June 15, 2013**  
at our West 7th St. store:

1500 West 7th Street, Saint Paul  
651-690-0507

# Shaller Family Sholom East

*The Rossy & Richard  
Shaller Family Sholom  
East campus offers  
a full range of senior  
housing options and  
services.*

- Assisted Living
- Memory Care
- Short-term Rehab
- Long-term Care
- Vitality & Aquatics Center
- Adult Day Center



**Call 651-328-2000  
today!**

740 Kay Avenue  
St. Paul, MN 55102

  
**sholom**  
www.Sholom.com 

Care.  
Compassion.  
Community.



*Instead of watching TV, make TV!*

If you have the **desire to produce television** to express yourself, to get your point across, to help your neighbors, or to change your community for the better, we can help!



(651) 298-8908  
[www.spnn.org](http://www.spnn.org)

375 Jackson St., Ste 250  
Saint Paul, MN 55101



The Fort Road Federation Board  
Welcomes You to the Sixth Annual  
West End Neighbors' Garden Tour

The West Seventh/Fort Road Federation has had the pleasure of supporting the Garden Tour since its inception six years ago. We congratulate the West End Gardeners on the realization of their vision. During these years, the West End has offered for your viewing pleasure the abundance of beauty to be found in our neighborhood gardens.

If this is your first time taking the tour you will have the opportunity to see the West End in a new light. If you are a returning visitor, the community has worked hard to make this annual tour a new experience each time you visit, and we hope you will return to our neighborhoods often.

The West End has a diverse population of approximately 10,000 residents. People of differing lifestyles, incomes and ages are welcome in the West End and the wide range of choices within our housing stock is evidence of that. Goods and services that meet essential needs and more, are found within easy walking, biking, transit and driving distances. Access to the Mississippi River is nearby.

If you like what you've experienced here, we'd like to show you more. Please pick up a copy of our Community Reporter newspaper and other information at our greater locations. If you have questions about neighborhood livability, or want to talk about other questions you may have about our neighborhoods, please contact the Fort Road Federation offices below; or speak to one of our local realtors who know the neighborhoods well. You will be welcomed here, for our neighborhoods are just that, in the truest sense of the word.



**West Seventh/Fort Road Federation**

974 W. 7th St., Saint Paul, MN 55102

(651) 298-5599

[www.fortroadfederation.org](http://www.fortroadfederation.org)

